

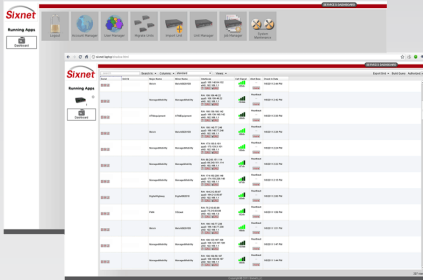
DATASHEET

Sixnet SixView Manager™

Powerful Remote Management, Monitoring & Control Software

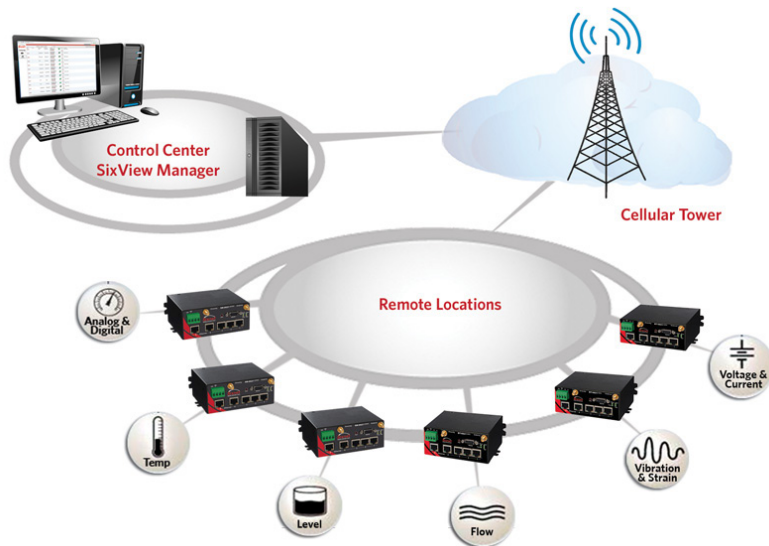
SixView Manager™ is flexible remote management software designed to increase productivity and reduce cost for organizations using Sixnet industrial-grade wireless routers. With a web-based console and customized dashboard, users are able to remotely access, configure and manage critical device information for several, even thousands, of Sixnet IndustrialPro and EnterprisePro Routers from a central location.

Key metrics such as signal strength, data usage, connectivity, IP addresses and alarms are displayed in real time to help simplify troubleshooting. Administrators can remotely set user-based access control parameters, upgrade firmware, configure VPNs and update firewall settings thereby saving time and reducing maintenance costs.



PRODUCT HIGHLIGHTS

- Remote site management lowers total cost of ownership
- Mass configuration simplifies and accelerates deployment
- Configurable parameters enhance security
- Manage thousands of devices from a central web-based console



FEATURES & BENEFITS

Mass Configuration & Auto Provisioning

- **Saves time and deployment costs**
- **Prevents unwanted access with enhanced security**
 - Initial unit configuration
 - Firmware updates
 - VPN configuration
 - Firewall policy enforcement
 - Mass unit migration
 - Grouping control
 - Import devices

Remote Troubleshooting & Control

- **Saves truck rolls**
- **Enables faster troubleshooting**
 - Change and update firmware
 - Change or update policies
 - Remote reboot
 - Delete or modify user access rights

Remote Administration of Multiple Devices

- **Facilitate security compliance**
- **Simplify ease of use**
 - Configuration changes
 - Job scheduling (single or multi device)
 - Intent-to-edit protections
 - Customize data grid views
 - Control user permissions (control editing capabilities)

Remote Monitoring & Reporting of Key Metrics

- **Provide real-time status**
- **Enable proactive decision making**
 - Up-time
 - Utilization
 - Signal strength
 - Firmware version
 - ESN, MDN or IMEI
 - IP address

Sixnet SixView Manager

Powerful Remote Management, Monitoring & Control Software

HARDWARE & SOFTWARE REQUIREMENTS

Software	Hardware
Web browser (examples: Firefox; Web Kit (Chrome, Safari); Internet Explorer)	Pentium 4, 3GHz or higher
Linux server (examples: Red Hat Enterprise 5; Centos Fedora)	4GB RAM or higher
Apache 2.x	120GB hard drive or higher (multi-drive RAID recommended)
MySQL 5.0.45 or higher	
PHP 5.3.3 or higher	



SELECTION GUIDE

Model	Description
SN-SVM-10	10 device licenses
SN-SVM-50	50 device licenses
SN-SVM-500	500 device licenses
SN-SVM-UL	Unlimited device licenses
SN-MAN	Annual renewal licenses

ABOUT SIXNET

Celebrating 35 years in operation, Sixnet provides innovative machine-to-machine (M2M) connectivity to industrial customers and markets worldwide. Sixnet's flexible solutions enable organizations to cost-effectively increase business productivity. By integrating powerful enterprise-class networking with rugged reliability, Sixnet meets the standards of the most demanding industrial applications in industries such as power & energy, banking & retail, transportation, video & security, utilities, military, mobile data, maritime and more. Based in Ballston Lake, NY, the company has offices across North America, Asia and Europe.

For more information, visit www.sixnet.com, email sales@sixnet.com or call +1 518 877 5173



Sixnet, LLC Corporate Headquarters
331 Ushers Road, Ballston Lake, NY 12019

T +1 518 877 5173 F +1 518 877 8346

FLEXIBLE. RELIABLE. POWERFUL.

© 2011 Sixnet. All Rights Reserved. MAR2012